

# 2024-25 COMBINED CLUBS LONG RACE SERIES

## SCHEDULE OF RACES

RACE	DAY	DATE	HOST CLUB	START	FINISH	VHF Channel
*Day 1	Sat	12 Oct 24	BYC	Midriver	Finish Line 2	VHF Ch 14
Day 2	Sat	19 Oct 24	DSS	Midriver	Finish Line 1	<b>VHF Ch 81</b>
Day 3	Sat	16 Nov 24	BYC	Midriver	Finish Line 2	<b>VHF Ch 81</b>
*Day 4	Sat	01 Feb 25	RYCT	Midriver	Finish Line 1	VHF Ch 14
Day 5	Sat	01 Mar 25	RYCT	Midriver	Finish Line 1	<b>VHF Ch 81</b>
*Day 6	Sat	29 Mar 25	DSS	Midriver	Finish Line 1	VHF Ch 14

### \*Combined event with the Harbour Series for Long Race days 1, 4 and 6.

These race days are part of both the Long and Harbour Race Series. All boats, whether entered in one or both series, will start together and race the same course. Separate results will be produced for each series based on their respective handicaps.

### FIRST WARNING SIGNAL TIMES & GROUP IDENTIFIERS

GROUP	WARNING SIGNAL		GROUP NUMERAL
	Race 1, 4 & 6	Race 2, 3 & 5	
Group 1	13:25	09:55	1
Group 2	13:30	10:00	2
Group 3	13:35	10:05	3
Group 4	13:40	10:10	4

### CREW DECLARATION – a crew declaration must be submitted before your Group race warning signal.

**STARTING LINE** – Midriver Start: The midriver starting line will be between an orange staff or orange flag on the Committee Boat and a yellow inflatable buoy. The Committee Boat will be moored in an area bounded by a line between Castray Esplanade and Kangaroo Bluff to the north and Crayfish Point and Trywork Point to the south. The name of the Committee Boat for the day will be posted on the start list. It will be standing by on VHF Channel 14 if competitors require directions to the starting line.

**CASTRAY ESPLANADE FINISHING LINE 1 –host clubs DSS & RYCT:** Finishing Line 1 will be between the flagpole on the Castray Box and a yellow with red band inflatable buoy laid approximately east of Castray Box.

**VICTORIA ESPLANADE FINISHING LINE 2 –host club BYC:** Finishing line 2 will be between the flagpole on the Victoria Esplanade Box and a yellow with red band inflatable buoy laid approximately west of the Victoria Esplanade Box

**STARTING & RADIO INSTRUCTIONS** – The starting procedure will be in accordance with RSS 26 except after each start there may be a 30 second time lag in the displaying of the new Group identifier and course flag/course board but the time for the succeeding Group shall be taken from the signal indicating the start of the previous Group. Competitors may be advised of starting procedure signals for **aces 2, 3 & 5 on VHF Ch 81** and for **aces 1, 4 & 6 on VHF CH 14**. Note: Boats should not transmit on VHF Ch 81 or 14 whilst a starting sequence is in progress except in an emergency.

**SHORTENING COURSE** - Should the Race Committee decide to shorten course, Code flag S will be displayed on the Race Committee Boat or on the Castray Esplanade Box or Victoria Esplanade Box. This will be accompanied by two (2) sound signals and shall apply to all Groups unless group numeral signals are displayed, in which case it shall apply only to those Groups whose signal is displayed. Boats shall finish from the course side of the finishing line.

**COURSE SIGNALS** - Courses will be indicated by course boards displayed on the Race Committee Boat. A windward laid mark may be laid as the first mark of the course after the start. This mark will be an orange inflatable buoy and if deployed will be laid approximately to windward at a distance of between 0.5 – 2.0 nautical miles from the starting line. The direction of rounding the windward mark will be indicated on the Race Committee Boat – green for starboard rounding and red for port rounding. If no signal is made, this mark is deleted from the course. The deployment or non-deployment of this mark may be advised by VHF Channel 14. Failure to advise will not be grounds for redress.

Where applicable all boats must pass to seaward of the Iron Port.

### COURSES 07 – 16 - ALL MARKS ARE TO BE ROUNDED AND LEFT TO PORT Approx distance NM

07	Start → P → H → A → P → Finishing line 1/2	10.3
08	Start → T → H → A → T → Finishing line 1/2	14.3
09	Start → T → H → A → P → Finishing line 1/2	12.5
10	Start → C → H → C → P → Finishing line 1/2	13.8
11	Start → R → A → T → Finishing line 1/2	16.5
12	Start → R → A → P → Finishing line 1/2	17.0
13	Start → ZC → H → ZC → Finishing line 1/2	16.8
14	Start → Q → A → G → Finishing line 1/2	20.1
15	Start → C → A → C → A → G → Finishing line 1/2	16.3
16	Start → ZC → R → Finishing line 1/2	12.0

### COURSES 17 – 19 - ALL MARKS ARE TO BE ROUNDED AND LEFT TO STARBOARD

17	Start → R → ZC → Finishing line 1/2	12.0
18	Start → H → T → C → Finishing line 1/2	09.0
19	Start → PH → A → G → Finishing line 1/2	19.0

### COURSES 20 – 43 - ALL MARKS ARE TO BE ROUNDED & LEFT TO STARBOARD UNLESS OTHERWISE INDICATED

20	Ralphs Bay - John Garrow - Ralphs Bay Start → R → G → R → Finishing line 1/2	16.6
21	Pigeon Holes & Blackmans Bay Start → PH → Q → Finishing line 1/2	16.9
22	White Rock - John Garrow - White Rock Start → WR → G → WR → Finishing line 1/2	18.7
23	Seacroft Bay Start → S → Finishing line 1/2	19.4
24	Seacroft Bay & Blackmans Bay Start → S → Q → Finishing line 1/2	20.9
25	Ralphs Bay & Piersons Point Start → R → K → Finishing line 1/2	21.5
26	Pigeon Holes - John Garrow - White Rock Start → PH → G → WR → Finishing line 1/2	22.2
27	Blackmans Bay, Ralphs Bay & Blackmans Bay Start → Q (to Port) → R (to Port) → Q (to Starboard) → Finishing line 1/2	24.2
28	Seacroft Bay, Blackmans Bay & Seacroft Bay Start → S → Q → S (Port) → Finishing line 1/2	27.4
29	Bull Bay Start → BB → Finishing line 1/2	24.8

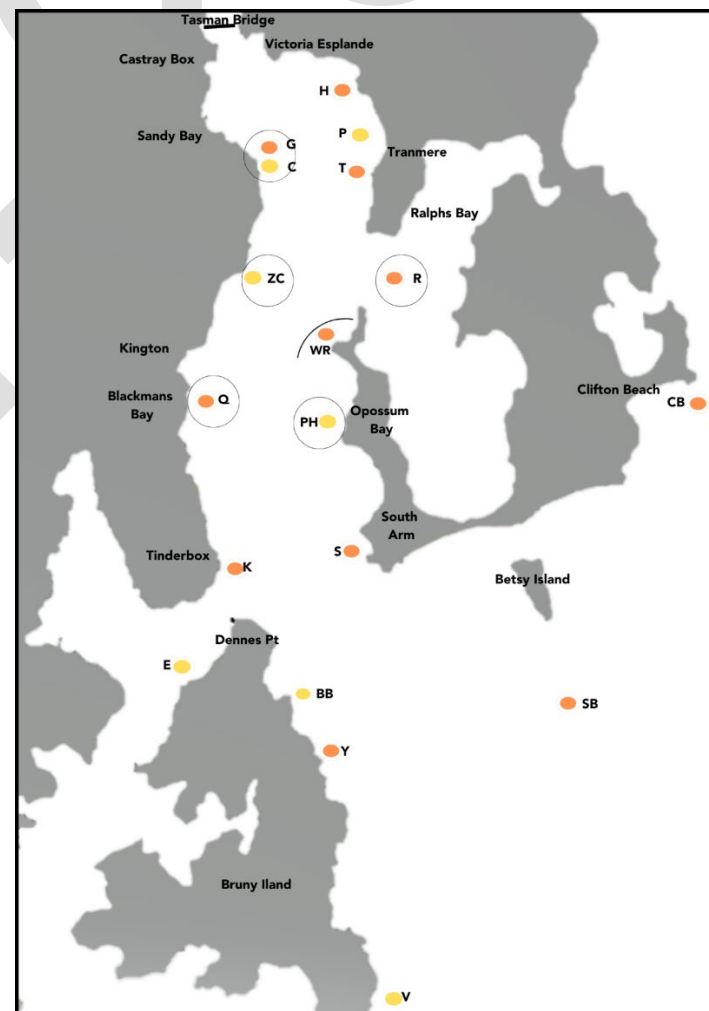
30	Bligh Point – Channel Race Start → E (to Port) → Finishing line 1.	25.4
31	Little Betsey Island Start → Little Betsey Island → Finishing line 1/2	28.4
32	Yellow Bluff Start → Y → Finishing line 1/2	28.7
33	Black Jack Rocks Start → Black Jack Rocks → Finishing line 1/2	29.0
34	Betsey Island Start → Betsey Island → Finishing line 1/2	30.0
35	Betsey Island Start → Betsey Island (to Port) → Finishing line 1/2	30.0
36	Ralphs Bay & Black Jack Rocks Start → R → Black Jack Rocks → Finishing line 1/2	30.6
37	Bull Bay (to Port) → Black Jack Rocks (to Port) Start → BB (to Port) → Black Jack Rocks (to Port) → Finishing line 1/2	31
38	Storm Bay Start → SB → Finishing line 1/2	33.0
39	Little Betsey Island - Yellow Bluff Start → Little Betsey Island → Y → Finishing line 1/2	33.6
40	Ralphs Bay - Black Jack Rocks - Yellow Bluff Start → R → Black Jack Rocks → Y → Finishing line 1/2	35.2
41	Clifton Beach Start → CB → Finishing line 1/2	36.8
42	Variety Bay Start → V → Finishing line 1/2	38.6
43	Storm Bay – Seacroft Bay – Storm Bay Start → SB → S → SB → Finishing line 1/2	46.4

#### MARKS

- A Yellow with red band inflatable buoy at the outer end of Castray Esplanade FINISHING LINE 1 or Victoria Esplanade FINISHING LINE 2.
- BB Yellow inflatable buoy 0.3 NM E of Bull Bay Point (~43 05.4'S 147 22.9'E).
- C Yellow inflatable buoy approximately 0.5 NM E of Cartwright Point. The buoy may be moved within 0.5 NM circle from that position.
- CB Orange inflatable buoy 0.5 NM S of Cape Deslacs (~42 59.7'S 147 33.2'E).
- E Yellow inflatable buoy 0.4 NM W of Bligh Point.
- G Orange inflatable buoy with a black band 0.3 NM E of John Garrow Light. The buoy may be moved within 0.3 NM circle from that position.
- H Orange permanent float mark 0.25 NM SW of Howrah Point.
- K Orange inflatable buoy 0.5 NM NE of Piersons Point (~43 02.9'S 147 21.0'E).
- P Yellow permanent float mark 0.5 NM SW of Punch's Reef.
- PH Yellow inflatable buoy 0.6 NM WNW of The Pigeon Holes (~43 00.3'S 147 23.1'E). The buoy may be moved within 0.3 NM circle from that position.
- Q Orange inflatable buoy 0.3 NM E of the northern end of Blackmans Bay (~43.00.03'S 147 20.26'E). The buoy may be moved within 0.3 NM circle from that position.
- R Orange inflatable buoy in Ralphs Bay 0.8 NM SSE of Droughty Point (~42 57.2'S 147 25.5'E). The buoy may be moved within 0.5 NM circle from that position.

- S Orange inflatable buoy in Seacroft Bay midway between Johns Point and Cape Deliverance (~43 02.5'S 147 24.3'E).
- T Orange permanent float mark 0.4 NM SW of Tranmere Point.
- SB Orange inflatable buoy on a line between the Iron Pot and Cape Raoul. approx. 5.5 NM from the Iron Pot (~43 06.9'S 147 30.9'E).
- V Yellow inflatable buoy 0.5 NM NE of Variety Bay (~43 12.0'S 147 25.7'E).
- WR Orange inflatable buoy laid 0.5 NM from, and within an arc, NW to SW of White Rock.
- Y Orange inflatable buoy 0.5 NM North of Yellow Bluff (~43 07. 2'S 147 24.0'E).
- ZC Yellow inflatable buoy 0.4 NM SE of Crayfish Point. The buoy may be moved within 0.3 NM circle from that position.

**TIME LIMIT:** The time limit will be 1830 hours on the day of racing. Boats that have not then finished will be scored 'Did Not Finish' (DNF) without a hearing. This changes Rule 35, A4 and A5.



**PLEASE READ THIS COURSE CARD IN CONJUNCTION WITH THE SAILING INSTRUCTIONS**