

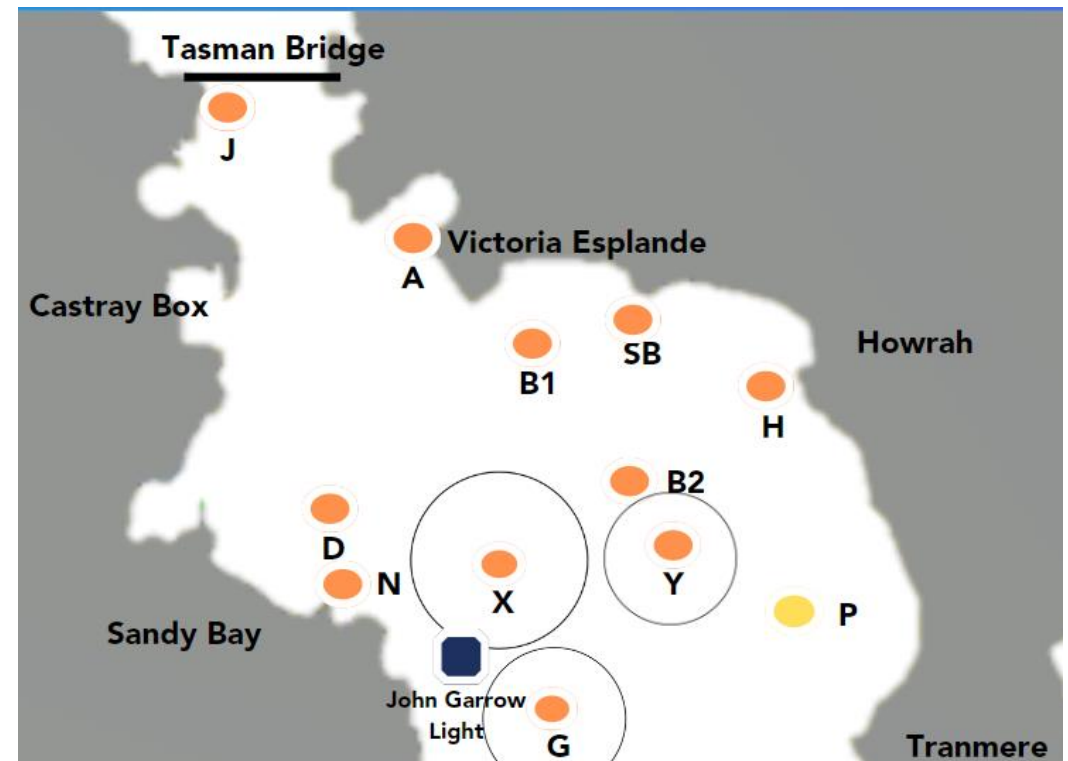
TWILIGHT SERIES COURSES

Marks to be rounded and left to the side shown below

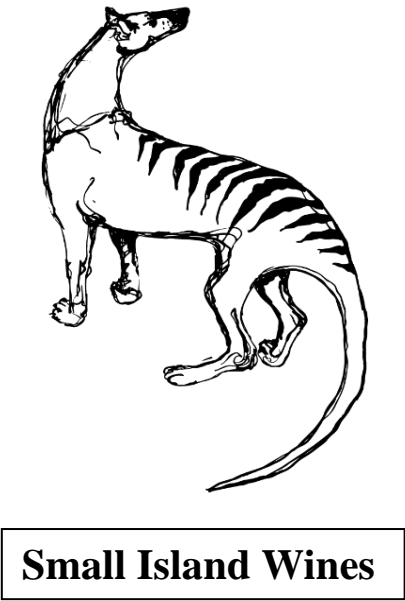
01	Start → P → A → B2 → Finish	Marks to Port
02	Start → P → H → Finish	Marks to Port
03	Start → P → H → A → B2 → Finish	Marks to Port
04	Start → H → X → Finish	Marks to Starboard
05	Start → H → G → Finish	Marks to Starboard
06	Start → H → G → D → Finish	Marks to Starboard
07	Start → H → Finish	Marks to Starboard
08	Start → B2 → A → X → B2 → Finish	Marks to Port
09	Start → B2 → A → X → B1 → Finish	Marks to Port
10	Start → B2 → H → Finish	Marks to Port
11	Start → B1 → A → B1 → Finish	Marks to Port
12	Start → B1 → H → Finish	Marks to Port
13	Start → B1 → D → Finish	Marks to Starboard
14	Start → <u>either B2 leaving it to PORT or E leaving it to STARBOARD</u> → A → X → B2 → Finish	Marks except E to Port
15.	Start → <u>either B2 leaving it to PORT or E leaving it to STARBOARD</u> → A → X → B1 → Finish	Marks except E to Port
16	Start → G → P → Finish	Marks to Port
17	Start → G → H → Finish	Marks to Port
18	Start → G → B2 → Finish	Marks to Port
19	Start → G → Finish	Marks to Port
20	Start → X → B1 → A → X → Finish	Marks to Port
21	Start → X → B1 → A → X → B1 → Finish	Marks to Port
22	Start → X → H → A → X → Finish	Marks to Port
23	Start → X → P → A → X → Finish	Marks to Port
24	Start → N → P → H → Finish	Marks to Port
25	Start → N → H → Finish	Marks to Port
26	Start → N → B2 → Finish	Marks to Port
27	Start → B2 → A → J → B1 → Finish	Marks to Port
28	Start → B1 → A → J → B1 → Finish	Marks to Port
29	Start → B2 → A → B1 → Finish	Marks to Port
30	Start → D → A → D → Finish	Marks to Port
31	Start → D → B2 → A → D → Finish	Marks to Port
32	Start → D → B1 → Finish	Marks to Port
33	Start → H → Y → H → Y → Finish	Marks to Starboard
34	Start → H → Y → H → B2 → Finish	Marks to Starboard
35	Start → SB → B2 → SB → B2 → Finish	Marks to Starboard
36	Start → SB → B2 → Finish	Marks to Starboard
37	Start → J → B2 → A → B2 → Finish	Marks to Port
38	Start → J → B2 → A → B1 → Finish	Marks to Port
39	Start → J → B1 → A → B1 → Finish	Marks to Port
40	Start → J → B2 → Finish	Marks to Port

MARKS – Bearings and distances are approximate only.

- A** Black and white chequered inflatable buoy laid to the west of the Victoria Esplanade box or the committee boat.
- B1** Yellow permanent mark 0.5 NM SE of Kangaroo Bluff.
- B2** Yellow permanent mark 1.2 NM SE by S of Kangaroo Bluff.
- D** Orange permanent mark 0.5 NM ENE of Wrest Point.
- E** Black inflatable buoy with pink band 75 metres SSW of B2.
- G** Orange inflatable buoy with black band 0.5 NM ESE of John Garrow Light. The buoy may be moved within a 0.3 NM circle from that point.
- H** Orange permanent mark 0.25 NM SW of Howrah Point.
- J** Yellow buoy 0.2 NM NE of the Powder Jetty
- N** Yellow buoy 0.1 NM N of Nutgrove Beach.
- P** Yellow permanent mark 0.5 NM SW of Punks Reef.
- SB** Orange inflatable buoy on a line 0.3 NM to 0.5 NM SE of Second Bluff.
- X** Orange inflatable buoy, midriver, on a line between Sandy Bay Point and B2. The buoy may be moved within a 0.3 NM circle from that point.
- Y** Orange inflatable buoy 0.3 NM S of B2 which may be moved within a 0.2 NM circle from that point.



BYC Twilight Series proudly supported by



Small Island Wines

