



SECTION 5 - BELLERIVE YACHT CLUB TWILIGHT SERIES

The notation [NP] in a rule of the sailing instructions (SI's) means that a boat may not protest another boat for breaking that rule. This changes RRS 60.1(a).

1. SCHEDULE OF RACES

SERIES 1	SERIES 2	WOMENS	OTHER
8 Oct	14 Jan	3 Dec	22 Oct – Pursuit Race
15 Oct	21 Jan	28 Jan	17 Dec – Trophy Race
29 Oct	4 Feb	11 Mar	
5 Nov	11 Feb		These races are included
12 Nov	18 Feb	Separate entries	In the Series 1 entry.
19 Nov	25 Feb	required for this	
26 Nov	4 Mar	series but there	
10 Dec	18 Mar	are no entry fees.	
	25 Mar		

2. CREW DECLARATION

2.1. Crew Declaration

2.1.1. For each race a boat shall submit a Crew Declaration via TOPYACHT before their warning signal. The Crew Declaration shall confirm that the boat intends to race and shall include required details of persons on board as follows:

- i. Name;
- ii. Contact phone number; and
- iii. Australian Sailing Number in accordance with SI 2.3.

2.2. [NP] Boats that do not comply with SI 2.1.1. will be scored DSQ without a hearing for the relevant race. This changes RRS A5.1.

2.3. All crew members must comply with the AS Prescription to RRS 46. All participating crew members shall be a member of a club affiliated to Australian Sailing or hold a valid SailPass.

3. SHIPPING

Boats must keep well clear of commercial shipping. All vessels must give way to ships under command of a pilot (displaying Code Flag H) or under command of a Pilot Exempt Master (flying a plain White Flag) as per Regulation 29 of the Marine and Safety (Pilotage and Navigation) Regulations 2017. The minimum recommended distance is at least 250 metres ahead of a moving vessel, not between an escort vessel (blue flashing light) and the moving vessel and at least 60 metres from the sides or stern.

4. ANCHORS

While racing, boats shall not allow anchors to protrude outside of the hull limits. Anchors which are stowed as an integral part of the bowsprit and whose shaft is secured within a slot on the boat is permitted.

5. SAILS

Only a mainsail, mizzen and headsail as defined in RRS 55.4 shall be used. Headsails shall not be set flying. No sail shall be set forward of the point of attachment of the permanent forestay.

6. STARTING TIMES

Class	Warning Signal	Starting Time	Class Flag
Division D	17:45	17:50	D
Division A	17:50	17:55	A
Division B	17:55	18:00	B
Division C	18:00	18:05	C

7. STARTING AND FINISHING

- 7.1. Victoria Esplanade Box: the BYC burgee will be flown while race officials are in attendance. The starting and finishing line will be between the flagpole and a black and white chequered inflatable buoy laid approximately west of the box. If a green flagmark is laid near the box, approximately on the starting and finishing line, it shall be left on the same side as the box when starting or finishing.
- 7.2. Committee Boat: the starting line will be between an orange staff on the committee boat and a black and white chequered flagmark. side. If a green flagmark is laid near the committee boat, approximately on the starting and finishing line, it shall be left on the same side as the committee boat when starting. The finishing line will be at the Victoria Esplanade box as described in 6.1 above.

8. COURSES

- 8.1. Courses will be indicated by number boards displayed on the box or committee boat.

MARKS ARE TO BE ROUNDED AND LEFT TO SIDE SHOWN BELOW

01	Start → P → A → B2 → Finish	Marks to Port
02	Start → P → H → Finish	Marks to Port
03	Start → P → H → A → B2 → Finish	Marks to Port
04	Start → H → X → Finish	Marks to Starboard
05	Start → H → G → Finish	Marks to Starboard
06	Start → H → G → D → Finish	Marks to Starboard
07	Start → H → Finish	Marks to Starboard
08	Start → B2 → A → X → B2 → Finish	Marks to Port
09	Start → B2 → A → X → B1 → Finish	Marks to Port
10	Start → B2 → H → Finish	Marks to Port
11	Start → B1 → A → B1 → Finish	Marks to Port
12	Start → B1 → H → Finish	Marks to Port
13	Start → B1 → D → Finish	Marks to Starboard
14	Start → passing between B2 and E and either leaving B2 to PORT or leaving E to STARBOARD → A → X → B2 → Finish	Marks except E to Port
15	Start → passing between B2 and E and either leaving B2 to PORT or leaving E to STARBOARD → A → X → B1 → Finish	Marks except E to Port
16	Start → G → P → Finish	Marks to Port
17	Start → G → H → Finish	Marks to Port
18	Start → G → B2 → Finish	Marks to Port
19	Start → G → Finish	Marks to Port
20	Start → X → B1 → A → X → Finish	Marks to Port
21	Start → X → B1 → A → X → B1 → Finish	Marks to Port
22	Start → X → H → A → X → Finish	Marks to Port

23	Start → X → P → A → X → Finish	Marks to Port
24	Start → N → P → H → Finish	Marks to Port
25	Start → N → H → Finish	Marks to Port
26	Start → N → B2 → Finish	Marks to Port
27	Start → B2 → A → J → B1 → Finish	Marks to Port
28	Start → B1 → A → J → B1 → Finish	Marks to Port
29	Start → B2 → A → B1 → Finish	Marks to Port
30	Start → D → A → D → Finish	Marks to Port
31	Start → D → B2 → A → D → Finish	Marks to Port
32	Start → D → B1 → Finish	Marks to Port
33	Start → H → Y → H → Y → Finish	Marks to Starboard
34	Start → H → Y → H → B2 → Finish	Marks to Starboard
35	Start → SB → B2 → SB → B2 → Finish	Marks to Starboard
36	Start → SB → B2 → Finish	Marks to Starboard
37	Start → J → B2 → A → B2 → Finish	Marks to Port
38	Start → J → B2 → A → B1 → Finish	Marks to Port
39	Start → J → B1 → A → B1 → Finish	Marks to Port
40	Start → J → B2 → Finish	Marks to Port

9. MARKS

- A Black and White Chequered band inflatable buoy laid to the W of the Victoria Esplanade Box or the committee boat.
- B1 Yellow permanent mark 0.5 NM SE, Kangaroo Bluff (BYC1 Permanent).
- B2 Yellow permanent mark 1.2 NM SSE of Kangaroo Bluff (BYC2 Permanent).
- D Orange illuminated mark 0.5 NM ENE of Wrest Point (DSS Permanent).
- E Black inflatable buoy with pink band 75 metres SSW of B2.
- G Orange inflatable buoy with black band 0.5 nm ESE of John Garrow Light. The buoy may be moved within a 0.3 nm circle from that point.
- H Orange permanent mark 0.25 NM SW of Howrah Point.
- J Yellow permanent mark 0.1 NM NE of Gunpowder Jetty (Government House Permanent).
- N Yellow permanent mark 0.1 NM N of Nutgrove Beach.
- P Yellow permanent mark 0.5 nm Sw of Punchs Reef.
- SB Orange inflatable buoy on a line 0.3 and 0.5 nm SE of Second Bluff.
- X Orange inflatable buoy, midriver, on a line between Sandy Bay point and B2. The buoy may be moved Within a 0.3 nm circle from that point.
- Y Orange inflatable buoy 0.3 nm S of B2 which may be moved within a 0.2 nm circle from that point.

10. RACE AREA AND SAFETY CATEGORIES

Twilight Series Racing will be sailed on the River Derwent and will be Category 7. In all cases AS SR Section 5, 5.01.1 (i) (on a boat without lifelines complying with 3.12, a lifejacket complying with 5.01.1(i), shall be worn by each member of the crew while on deck) shall apply.

11. RESULTS

- 11.1. Performance Based Handicaps will be determined by the Race Committee and may be changed at any time. The decision of the Race Committee on handicaps will not be grounds for request for redress. This change RRS 61.1(a).
- 11.2. Results will be published on the club website as soon as practical after the race and will also be posted on the Official Notice Board.

12. PROTESTS

Protests must be lodged at BYC within two (2) hours of the last boat finishing on that day or the Race Committee signalling "No More Racing Today". The protest will be heard at a time determined by the Protest Committee.

13. CHANGES TO THE SAILING INSTRUCTIONS

Will be posted on the Official Notice Board.

14. TIME LIMIT

The time limit for Twilight races will be 20:00. Boats that have not then finished will be scored Did Not Finish (DNF) without a hearing. This changes Rule 35, A4 and A5.

15. NUMBER OF CREW

The minimum number of adult crew to be on board is two (2).

16. SERIES SCORING

- 16.1 Three races are required to constitute a series. If six or seven races are completed, a boat's series scores shall be the total of her race scores excluding her worst score. If eight or nine races have been completed, a boat's series score shall be the total of her race scores excluding her two worst scores.
- 16.2 For the Women's Twilight series, one race is required to constitute a series. A boat's series score will be the total of her race scores.

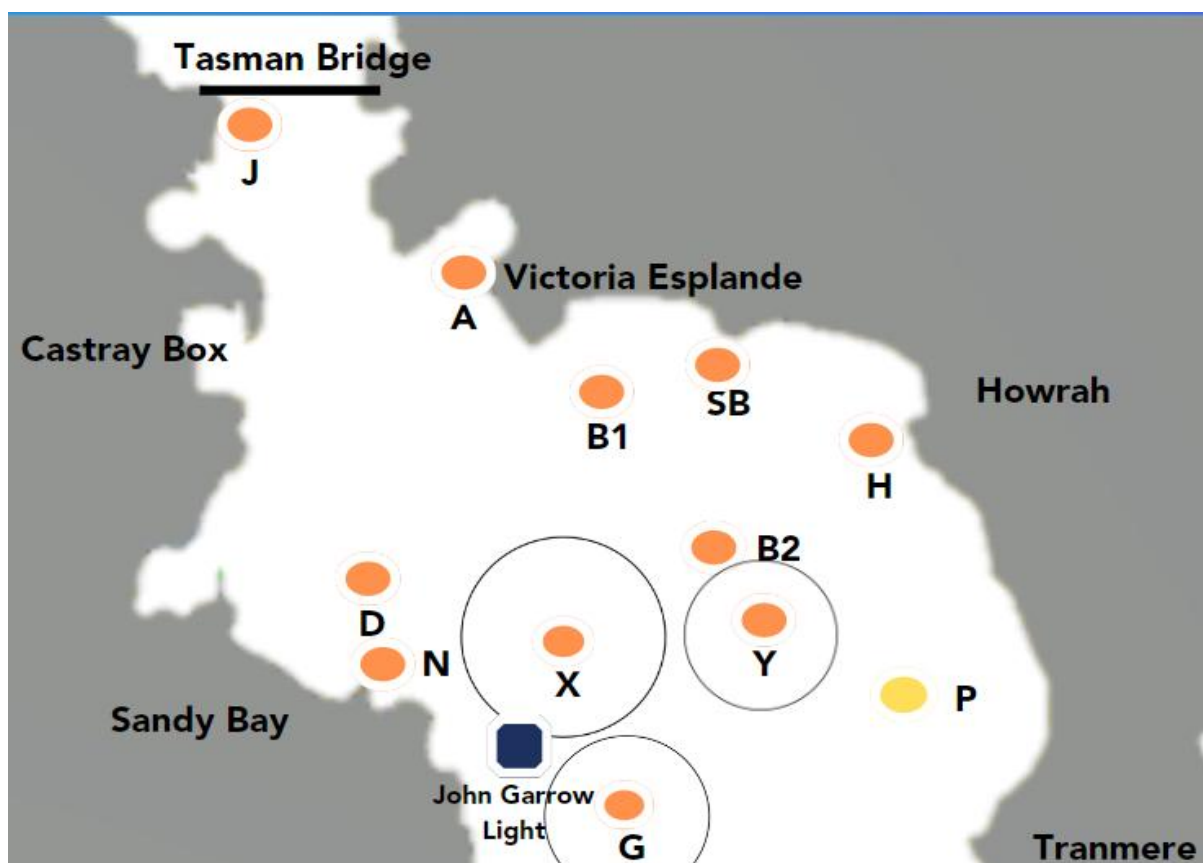
17. RETIREMENTS

Any boat ceasing racing shall report the fact to the Race Committee as soon as possible.

18. RADIO INSTRUCTIONS

- 18.1. Boats shall maintain a listening watch on VHF Channel 14 for broadcasts by the Race Committee.
- 18.2. The Race Committee may broadcast the course to be sailed, names/sail numbers of OCS boats and/or other information of interest to competitors.

TWILIGHT COURSE CARD



Disclaimer: note map not to scale positions are approximate only.